



DFW Local Late Model Series 2021 Tire Rule Bulletin 4/19/21

Tire Rule for Texas Local Late Model Series-DFW 2021 Season.

Tires Front and Rear: Hoosier USA D21 shoulder plated "Crate Racin' ". Grooving, Single Blade Scything/Siping or combination of the two is allowed across and/or radially, full or partial depth, in the exterior factory mold lines with exception the outer shoulder blocks. The shoulder block may contain one Groove or single blade Sipe extending from the tread block model line to the through the shoulder block not below the straight line. (See Fig B) Cleaning, Sanding and/or Buffing are allowed within the shoulder straight lines. No additional grooves, sipes, or cuts are allowed on the tread blocks that are not present from the factory mold or mentioned above. No needling or "slashing" with nail or carbide grinding disks. No chemical or compound altering of any kind allowed. Tire Samples will be submitted upon request, lab testing will be used to scientifically verify altered and unaltered tires with the Hoosiers USA D21 date code as the benchmark.

Explanation: All factory grooves or marks may be cleaned, cut deeper and/or wider to maintain or create edges, groove, etc. Cutting and single blade Siping may be done with: Grooving Iron, Sipe Tool (single blade), Exacto Blade, Grandpas pocket knife, Can Openers or the like. Any tool is an acceptable tool to make or maintain Cuts and/or Grooves in the factory molded lines only passing through the shoulder block with a single cut. Factory Tread Block perimeter grooves may be cut deeper or wider. The factory wear or guild marks in the face of the Tread Block may be cut deeper, and/or wider to maintain or create groove depth and edges. A single blade sipe in this location is also an acceptable cut. Grooves, Cuts or Sipes in the tread block tread may be full or partial depth. No intentional grooves or cut are allowed in the interior of the tire.

Fig A

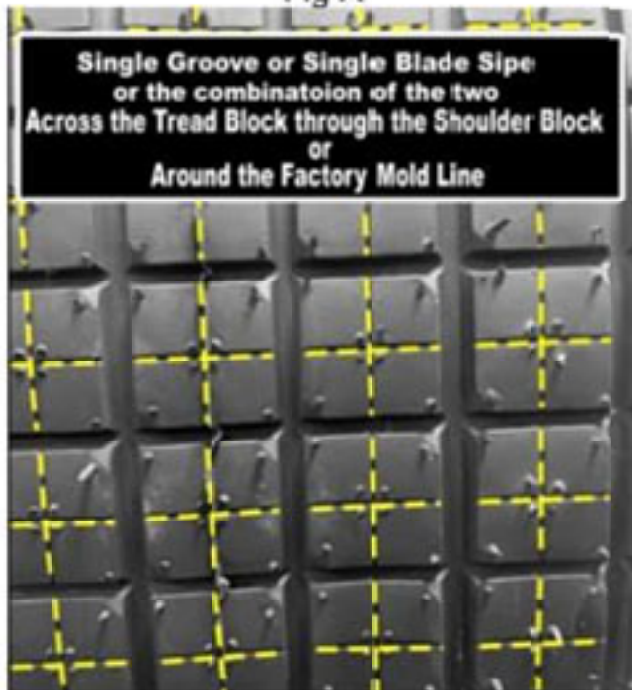


Fig B

